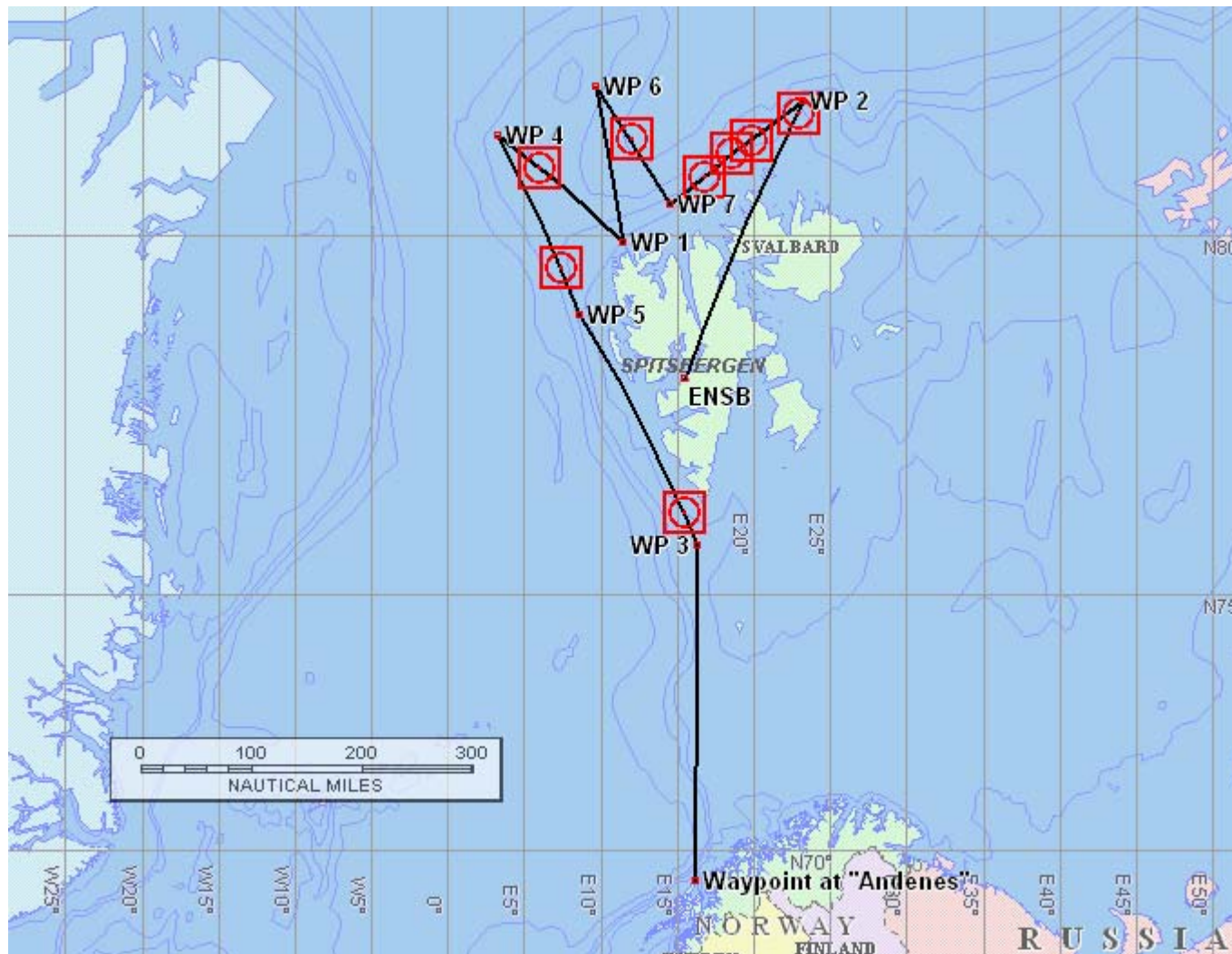


THORPEX 2008

D-CMET

Flight-No. 15

15-March-2008



Takeoff Time: 1300 UTC

EET: 3:30 hrs

Altitude: F270 / F310

Planned Routing:

ENSB
N8124 E02315
N8020 E01435
N8135 E00940
N7955 E01125
N8105 E00320
N7905 E00840
N7550 E01620 / N0400 F310
AND ENAN

Remark:

request to drop 8 meteorological
sonds at the points which are
marked in the map with



Phone:

Frank Probst (Flight Ops)
0049 171301 64 27

Roland Welser (Pilot)
0049 171 301 64 36